

# Networked Project Management with DBE

---



## Open Standards Open Source Solutions

Presentation for DBE Workshop, Tampere  
Henri Bergius, [henri.bergius@nemein.com](mailto:henri.bergius@nemein.com)  
2005-10-31

# Nemein Oy



- Open Source solution provider
  - Two business areas:
    - Content Management Systems
    - Project Management software
  - Active participant in communities like Midgard Project, OSCOM and Microformats
  - 7 employees, lots of subcontractors
  - Espoo, Finland, Łodz, Poland and Tbilisi, Georgia
  - Clients mainly in Finland and EU area
- Partnered with Yukatan for Java integration

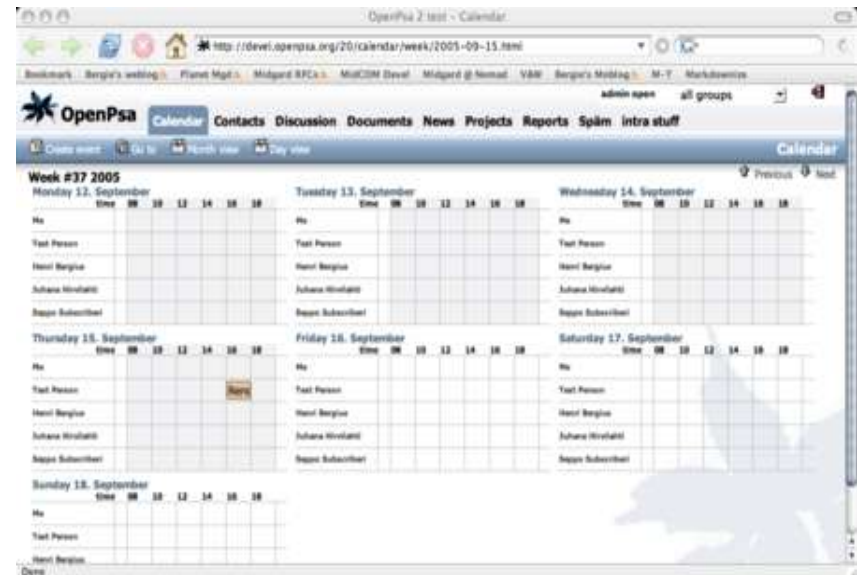
# Usage scenario

---

- Typical project management software is monolithic
- Outsourcing and microcorporations are increasing trend in IT business
- How to allow collaboration across corporate boundaries?
- 
- Solution:
  - Connect project management apps of partner companies through the DBE network

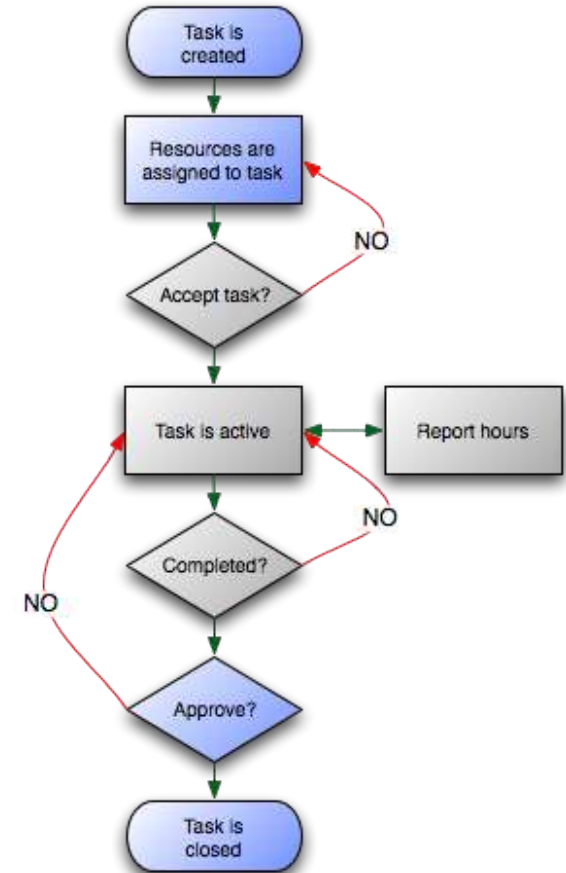
# OpenPsa

- Management software for software companies, consultancies and IT departments
  - Project management
  - Contact management and sales
  - Help desk
  - Calendaring
  - Document management
- Developed by Nemein, GPL license
- Users include Anttila, If Industrial, Italian government, Lumene Group, ... soon also Yukatan



# Project workflow

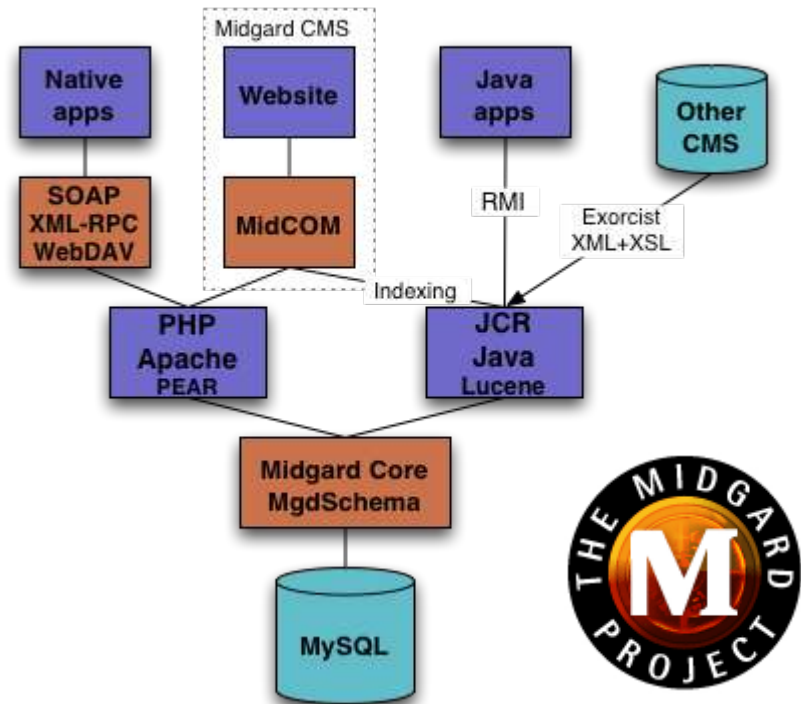
- Project manager assigns tasks to resources
  - Resources can be local or remote (DBE) users
- Resources can accept or decline task
- Hours can be reported to task after acceptance
- When task is finished resources can mark it as completed
  - Task's deliverable (document, SVN commit, ...) must be completed first
- Project manager must approve the task before it is closed



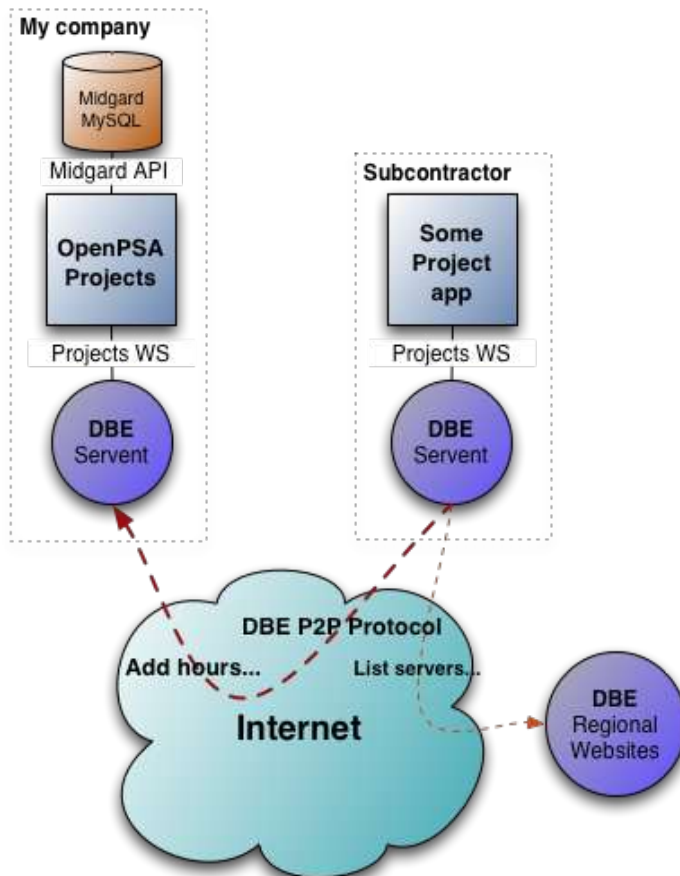
# OpenPsa Architecture

- OpenPsa builds on top of the popular Midgard CMS and MidCOM platform
- UI is built with PHP, Ajax and Microformats
- Midgard provides capabilities like:
  - UTF-8 internationalization
  - Replication
  - PAM and NTLM authentication
  - Java and PHP APIs
  - Indexing

## Midgard Framework 1.7 circa Q2/2005



# Connection with DBE



- Users use the PHP based UI
  - Remote DBE users are recognized with a service ID set in person preferences
  - Status is displayed in all person listings: 🌐 remote user 🌐 not synced
- OpenPsa service inside the Servent watches for changes
- Data is serialized to XML format using Exorcist
- XML gets transferred over DBE Fada network
- Service updates sync status to DB

# Project status

- DBE Driver project started in June 2005
  - Developed together with OpenPsa version 2.0
- First running version in August
  - Integrated with UI in October
- Two pilot customers are now live
- Currently works with OpenPsa CVS version
  - OpenPsa 2.0 beta to be released this week will include DBE connectivity as option

**Nemein Oy**  
Consultant Partner  
<http://www.nemein.com/>  Edit

**User account**  
bergie

**Digital Business Ecosystem** 

DBE ServiceID:  
2e48cb9fd47665d536b6665d210ebe72  
never synchronized

# OpenPsa and DBE demo

---

- <demo>

# Future possibilities

---

- Project broker for finding possible subcontractors from DBE network
  - “Who could do a 15 hour SyncML project next week?”
  - Connected to resource scheduling
  - Define competences as folksonomies
  - Skip agreements and pricing in first phase
- DBE connectivity to other OpenPsa modules
  - Coordinated sales projects
  - Calendar event invitations
  - ...